

# Roots and Shoots

The Newsletter of the Community Garden Network  
of Edmonton and Area



OF EDMONTON AND AREA

"...the voice that promotes and supports community gardening"

August 2007

## Lady Bugs in the Garden by Becky Lipton

## Upcoming Events

### In This Issue

- Lady Bugs in the Garden
- Partnership with EFCL
- Upcoming Events
- Feature on U of A Campus Community Garden
- Reminder about Volunteer Appreciation

### QUOTE OF THE MONTH

"We come from the earth, we return to the earth, and in between we garden."

~ Anonymous

There are lots of ladybugs in the garden these days, Yeah!!

However, their pupal stage does look somewhat like a potato beetle larvae, so I have included a few images so you can tell them apart. The main difference is that the ladybug has black markings across its back while the potato beetle larvae has black spots only in rows on its sides with its back being all orange. I am attaching the link for the potato beetle larvae too, so you can refresh your memory. Also, check out what the adult potato beetle looks like, as they have started to appear as adults as late July.

Also, there has been some discussion over who the long black and grey creatures are that are all over the garden these days. As you will see on the ladybug picture, they are the mid-larvae stage of the ladybug. They don't have any

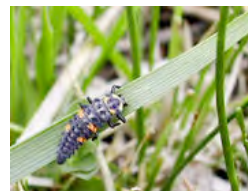
resemblance to the ladybug, so one can easily be tricked into thinking they are something else!



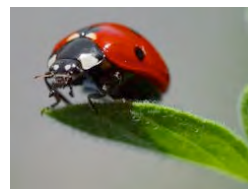
Potato Beetle



Pupal Stage of lady bug



Mid-stage larva of lady bug



Lady Beetle

- **Volunteer appreciation** brunch and silent auction on **November 3<sup>rd</sup>**. Should you have any items to contribute to the auction please inform Trudy at [info@edmcommunitygardens.org](mailto:info@edmcommunitygardens.org)

- We want to hear about what you are growing. Garden Surveys for the 2007 gardening survey should be filled out periodically. There's a chance to win a great prize in the fall!

## Special Thanks

- Thank you to Carol Rankin, Andy Brown, Odette Dionne, Dilshad Unwala, Anna Feddes, Janet Calpas-Feddes, Marilyn Short, Nicole Hiebert and Ann Demers who judged the Community Garden Competition this year. Your hard work is appreciated by all!



St. Albert Community Garden

# Featured Garden – U of A Campus Community Garden

## Winner of the 2007 Community Garden Competition

**Located at:** 89th Avenue, between 110th and 111th Streets, on the north side of the street.

**Plot Number:** no individual plots

**Total Garden Size:** 244m<sup>2</sup>

**Gardening Style:** Entirely organic. Wooden boxes or mounded soil provide us with raised beds on which we grow our produce: vegetables, fruit and herbs.

**Number of Participants:** approximately 55 volunteers (students, staff, faculty) who live or work on, or near campus. (2007)

**Fee:** free... just your time, effort and smiles!

**Description:**

The Campus Community Garden started in the spring of 2003. Our mandate is as follows:

- To produce food on campus, without the use of pesticides, chemicals, genetically modified plants, or treated city water.
- To promote awareness of organic farming, food production, and the ECOS office.
- To provide organic, fresh and healthy food for students and the wider Edmonton community through either the Campus food bank or other similar programs.
- To create nature connected recreational opportunities for students.
- To promote the cultivation of local, hardy and easily managed vegetables.

Currently, there are approximately 55 regular gardeners who volunteer throughout the summer, but participation varies from week to week. We have a mix of gardeners, including children, seniors, new immigrants, and students, most of which are students in the area.

This year, our tomatoes were off to a great start and we have a few nice herb beds. We have also planted some fruit trees and bushes just outside our plotted garden. We planted the lettuce and spinach in circular rows, which is visually pleasing. Overall, our plants are doing well and our harvests have been plentiful!

Garden improvements/additions

1. In addition to the raised boxes and beds, and the greenhouse/storage shed construction, we laid down drip irrigation in the garden. Irrigated watering is a more sustainable practice as it allows us to water plant roots, while minimizing water loss.
2. We have addressed the issue of deer and rabbits entering the garden by installing bird fencing around the garden to raise the fence height above 6 feet.
3. We have prevented grass from moving into the garden by delineating a 1 foot border around the fence and filling this border with native flowers to contribute to the garden aesthetic. We hope that these plants will encourage native beneficial predators and parasites to move into the garden, as well as provide the deer in the neighborhood with something to fill their bellies with other than raspberry leaves.
4. The Campus Community Garden decided to venture somewhat from the standard of cultivating local hardy fruits and vegetables and into heirloom gardening this season. Though often times this cultivation presents numerous obstacles, as an organic garden, we believe that the preservation of varieties with unique horticultural and culinary attributes is vital to an education in sustainable cultivation.

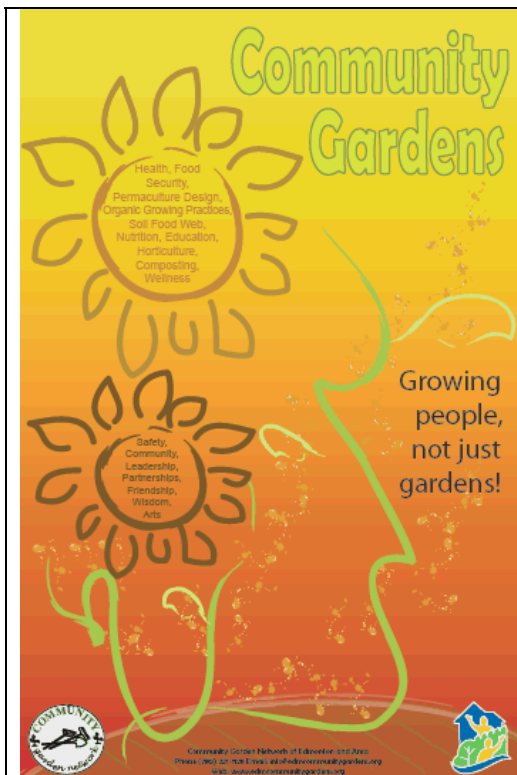


U of A Campus Community Garden

# Call for Board Members!

Community Garden Network is currently seeking candidates to for its Board of Directors. It is expected that monthly meetings and additional committee responsibilities will be approximately 6-10 hours per month. Candidates are asked to consider a commitment to the Community Garden Network Board for a three year rotation. Please contact Susan Penstone or Trudy Spooner for more information, 447-9600.

## Check out our new look!



### New Posters and Brochures

The CGN has recently ordered a new batch of posters and brochures which have been expertly designed by Deanna Kayne with the EFCL. The posters are printed on 100% Recycled 50% Post Consumer paper. This decision has had the environmental benefits of saving:

- 0.12 trees in the future
- 0.36lbs of waterborne waste
- 52 gallons of wastewater flow
  - 6lbs of solid waste
- 12lbs net greenhouse gases
  - 87,000 BTUs energy

\*These numbers were determined using the Mohawk Environmental Calculator



**Remember**  
Volunteer Appreciation  
Brunch on  
November 3<sup>rd</sup>

### Community Leagues and Community Gardens...Naturally!

Make a difference in your community by starting a community garden with your Community League. It's an excellent way to encourage people to get outside and socialize, provide an excellent opportunity for exercise and fresh air, allow children to learn about the food growing process, reduce crime in the area and create a beautiful space for all community members to enjoy!

For more information please contact Trudy Spooner with the Community Garden Network at 447-9600 or [info@edmccommunitygardens.org](mailto:info@edmccommunitygardens.org)



## Thank you to our sponsors



Edmonton Federation of  
**Community Leagues**



**Edmonton Horticultural Society**



If you wish to submit articles or notices for the upcoming edition of Roots and Shoots, the next deadline is September 25, 2007. For newsletter submissions or inquiries, please contact Lindsey Mulkins at [lindseymulkins@yahoo.com](mailto:lindseymulkins@yahoo.com)